

GENERAL CONDITIONS

Contractor must visit the site prior to preparing the bid to determine exact site conditions.  
Contractor must identify all underground utilities prior to excavating.

Contractor shall verify all dimensions and details in the field prior to construction. Report any discrepancy to the Architect immediately.  
The Contractor shall provide all items, articles, materials, operations, or methods mentioned, listed or scheduled on the Drawings, including all labor, materials, equipment, and incidentals necessary and required for their completion.

Contractor is responsible for obtaining all necessary permits before beginning the project. Permit fees are to be included in the Contract price.  
The contractor is to coordinate with the Architect when services need to be disrupted.

Where there is a choice of color, pattern or texture for a product and it is not stated in the Contract Documents the Contractor is to make a submittal to the Architect.

All work shall be done in a workman like manner by qualified personnel. Finish work shall be visually acceptable as judged by the Architect. Unsatisfactory work must be corrected before the approval for final payment.

Maintain the site in a neat, orderly fashion during construction and maintain access to the building to the extent possible.

Restore grass where damaged by construction.

Remove all debris caused by construction.

All work is to be guaranteed for a period of one year (or greater per product manufacturer's warranties).

RAMP

Ramps must comply with section 1012 of the 2020 New York State Building Code and ICC A11.1.

Controlling dimensions for:

Minimum Width: 36" clear between handrails;  
Handrail: Height (above finished surface of ramp slope): 34" min., 38" max.  
Clearance to wall: 1-1/2" minimum  
Circular shape: outside diameter of 1-1/4" min., 2" max.  
Other than circular shape: perimeter dimension of 4" min., 4-1/4" max., with 2-1/4" max. cross section

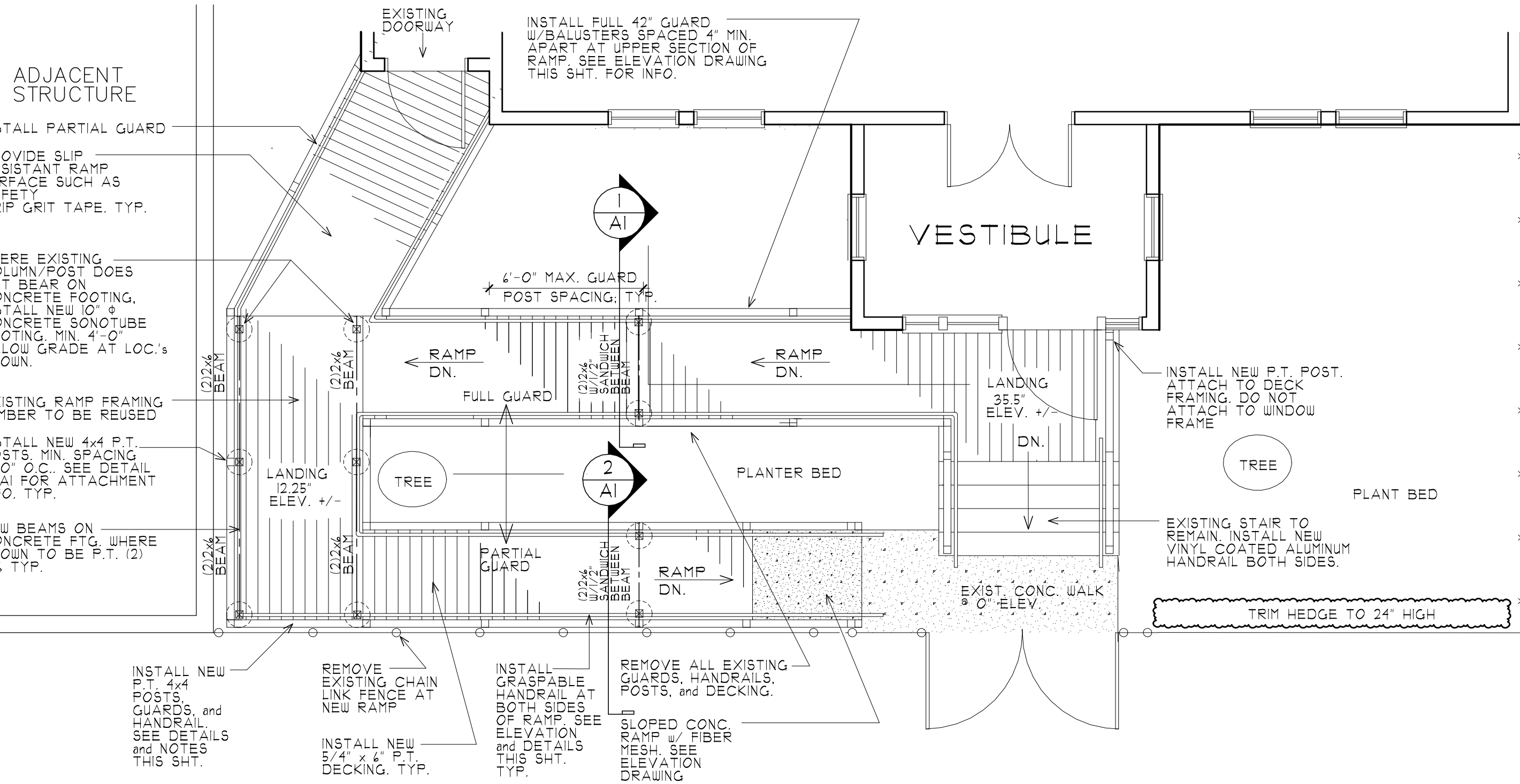
Exception: Handrails which have finger recesses may have a greater perimeter than 4 1/4". See R311.7.8.3 for a detailed description.

Extensions at Top and Bottom: extend horizontally above landing 12 inch minimum beyond top and bottom of ramp runs; return to wall, guard or floor/deck

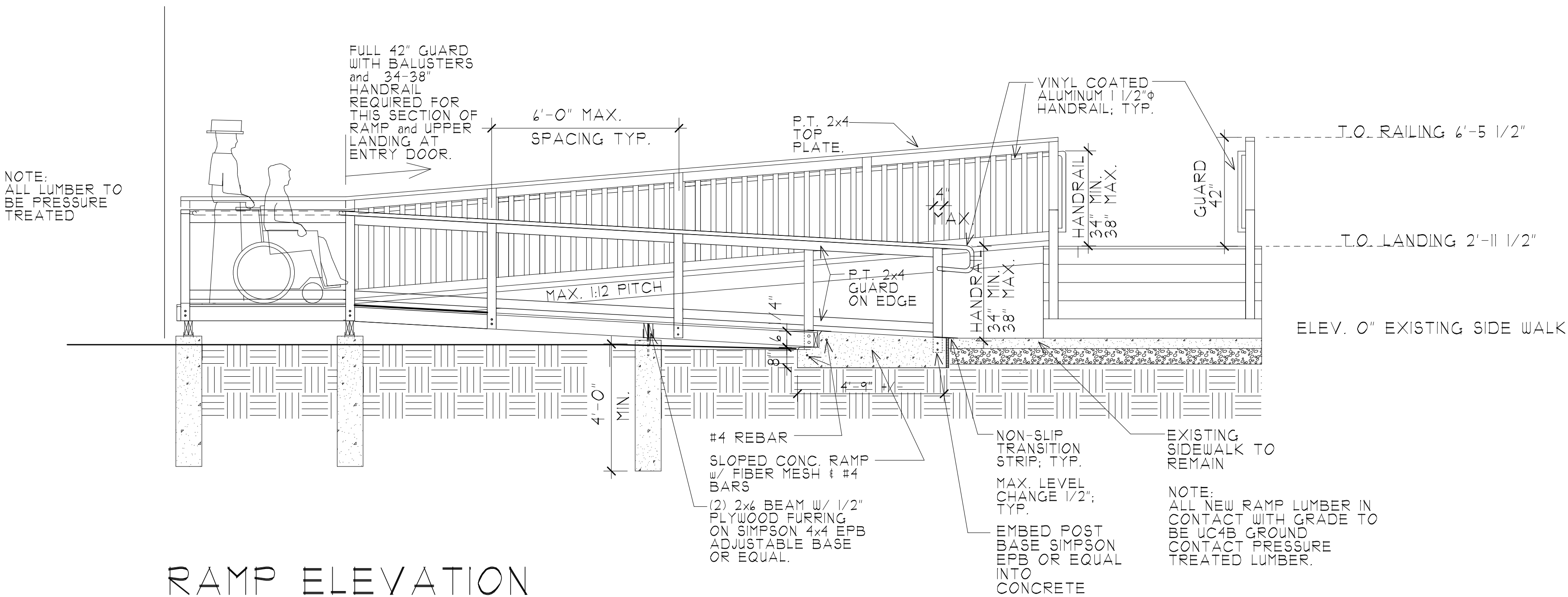
Guard: Required: at open sides of ramps/landings more than 30" A.F.F.  
Height: 42" minimum guard

Guards whose top rail also serves as a handrail shall have a height not less than 34 inches and not more than 38 inches measured vertically from the leading edge of the stair tread nosing

Guard opening limitations: guard openings shall not allow the passage of a sphere 4 in diameter.



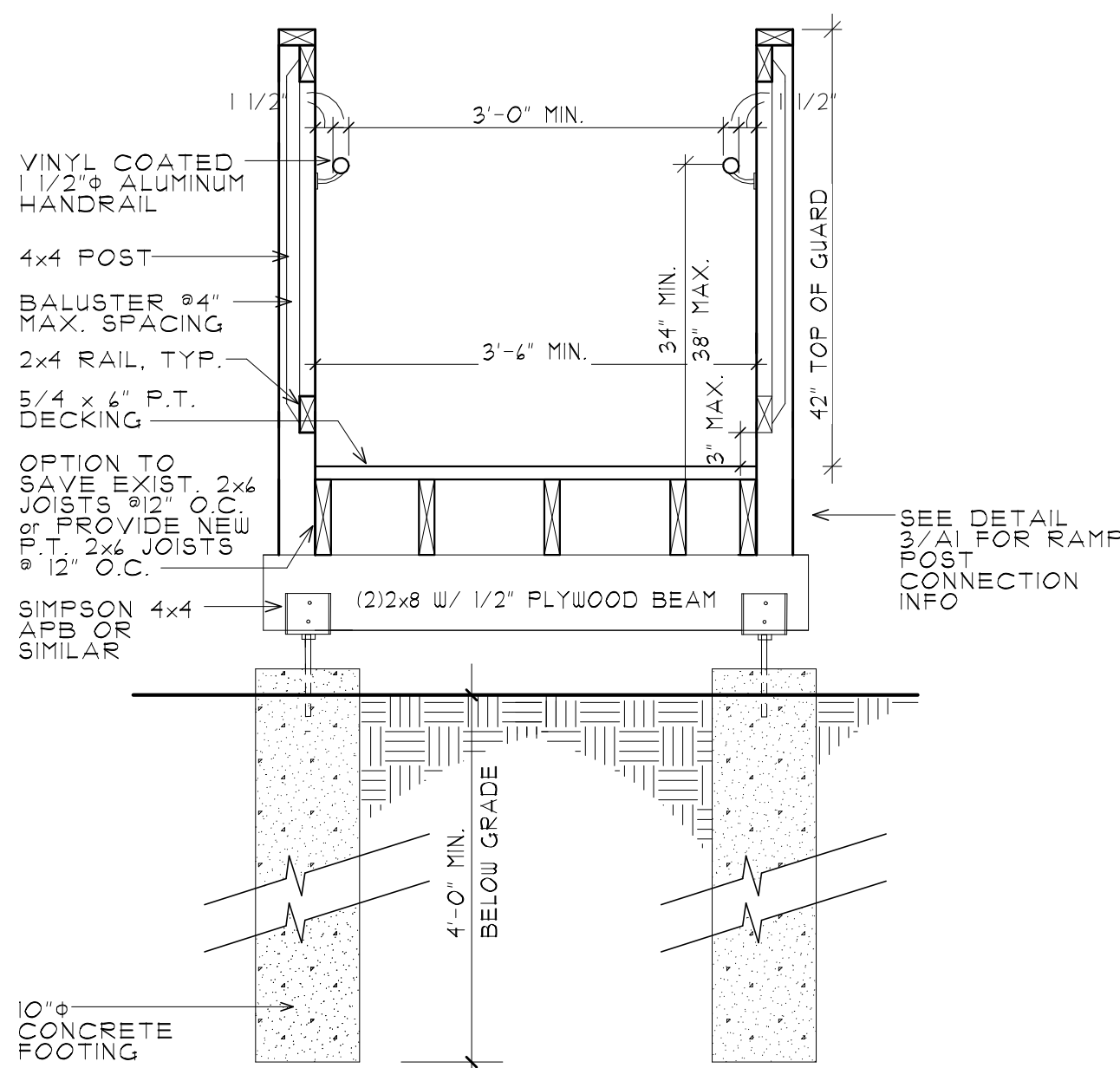
RAMP PLAN  
SCALE: 1/4" = 1'-0"



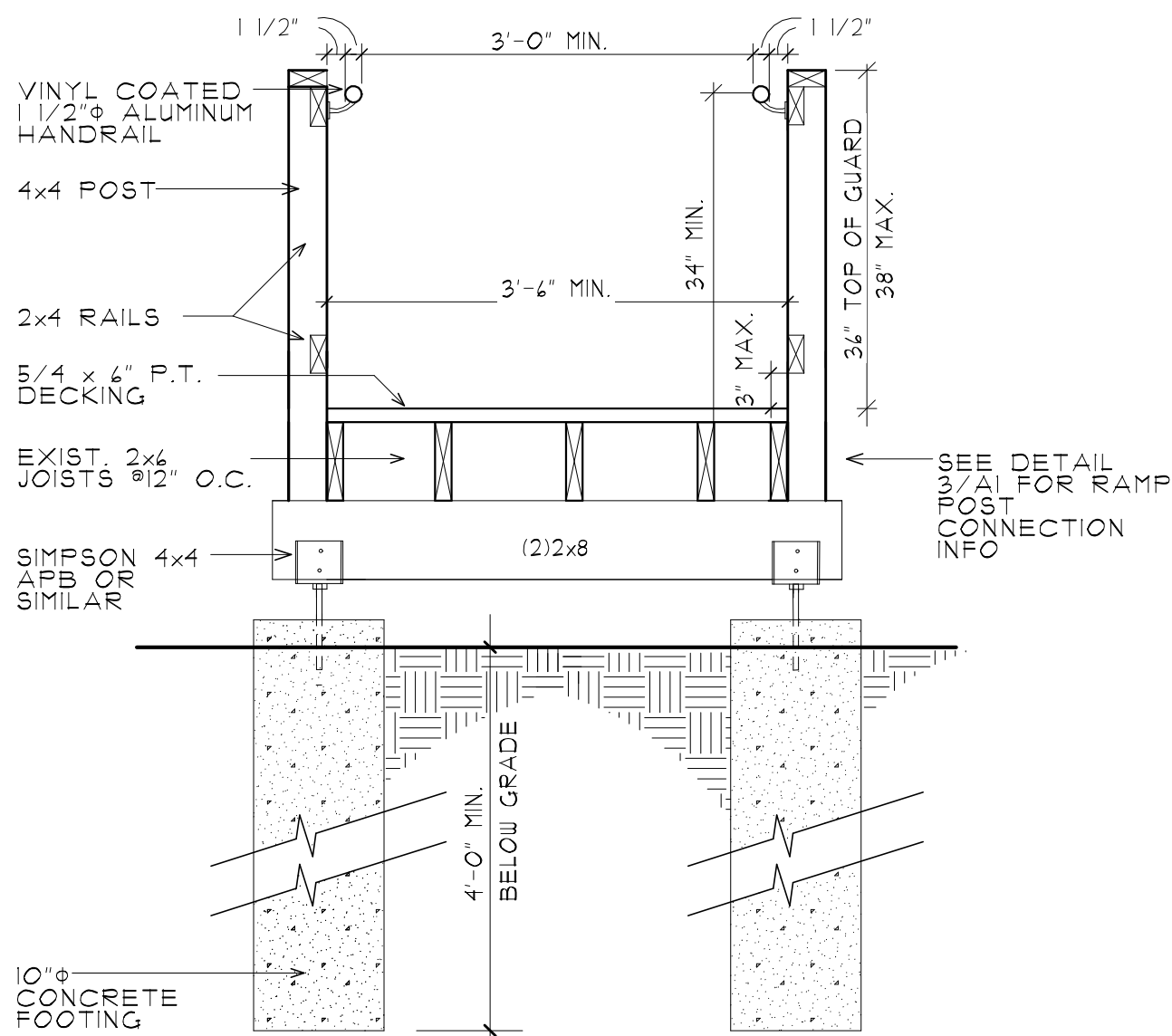
RAMP ELEVATION

SCALE: 3/16" = 1'-0"

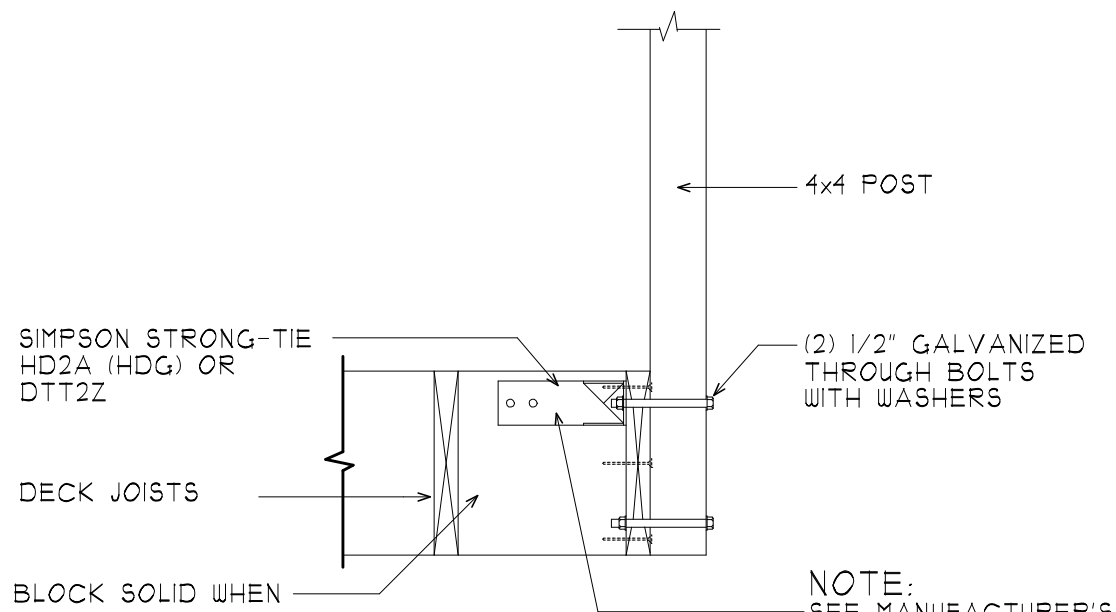
ADJACENT STRUCTURE



1 UPPER PORTION RAMP SECTION  
SCALE: 3/4" = 1'-0" (FULL GUARD)



2 LOWER PORTION RAMP SECTION  
SCALE: 3/4" = 1'-0" (PARTIAL GUARD)



3 TYPICAL POST CONNECTION  
SCALE: 1" = 1'-0"

GENERAL NOTES, RAMP PLAN, SECTIONS, DETAILS, ELEVATION

TITLE:

PROJECT: TCLB FACADES

3361 6th AVE  
TROY, NY

CLIENT: TROY COMMUNITY LAND BANK

DATE: 12/11/2024

DRAWN BY: SB

REVISIONS:

top

TROY ARCHITECTURE PRACTICE, PLLC.

210 RIVER ST.  
TROY, NY 12180

(518) 214-3050  
WWW.TAPINC.ORG  
THE CAPITAL REGION'S COMMUNITY DESIGN CENTER

SHEET:

A1

JOB: 233,026.02